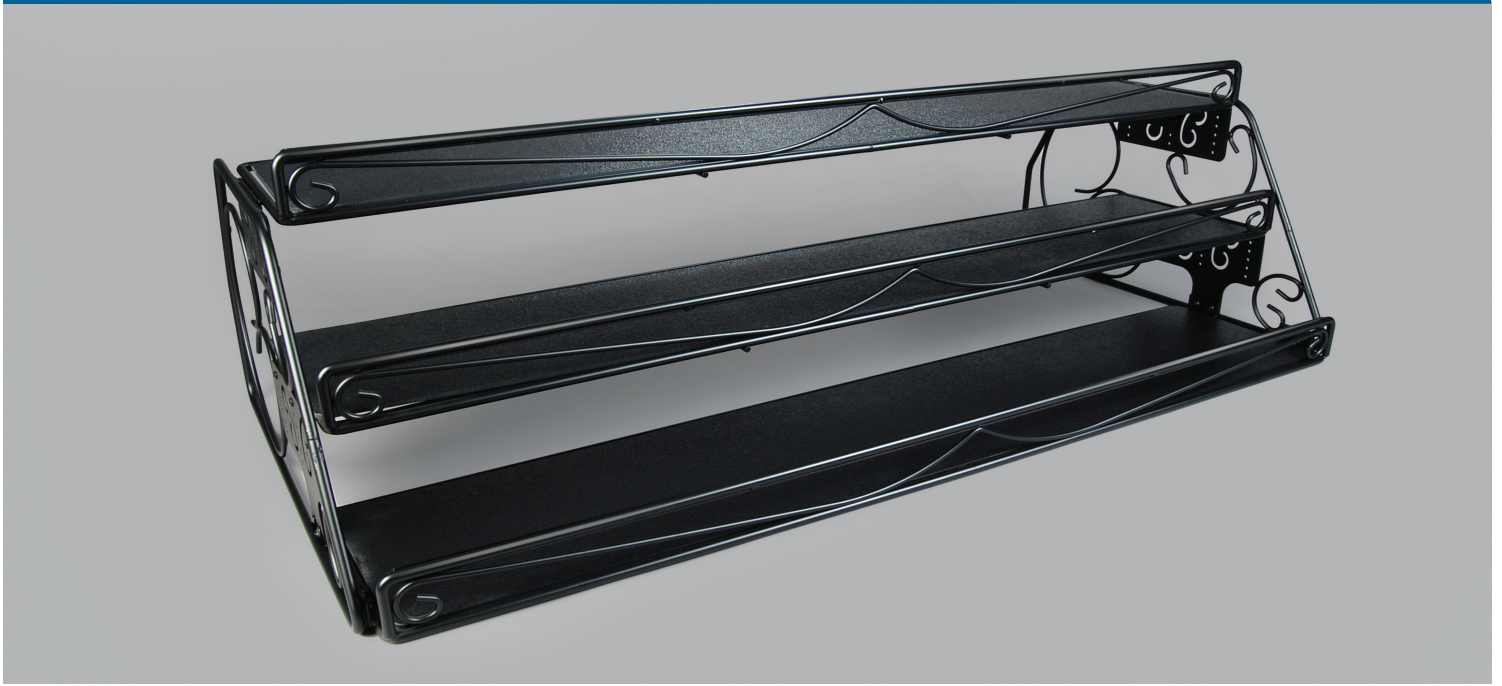


Regency Lunch Meat Display



Features and Benefits

- ◆ Decorative scrollwork provides an upscale look for deli display
- ◆ Black color blends with most sets
- ◆ Shelves adjust from 24" to 30" and can be angled
- ◆ Easy to assemble
- ◆ Constructed of solid steel for durability
- ◆ Inserts are black ABS plastic and are removable for easy cleaning

Upscale look for deli display case

Merchandise any meat and cheese assortment with the Regency Lunch Meat Display. The decorative scrollwork on the Organizer provides an upscale look, while efficiently displaying the items.

The shelves adjust from 24" D to 30" D and can be angled for a full view of the selections and enables easy product rotation. Constructed of solid steel for durability and inserts are removable for easy cleaning.

Specifications

Item No.	Dimensions	Pack
9921419508	48" W x 23.5" L x 15" H	1

20190405

For more information,
call **800.422.2547**
or visit www.siffron.com

siffron[™]
always on